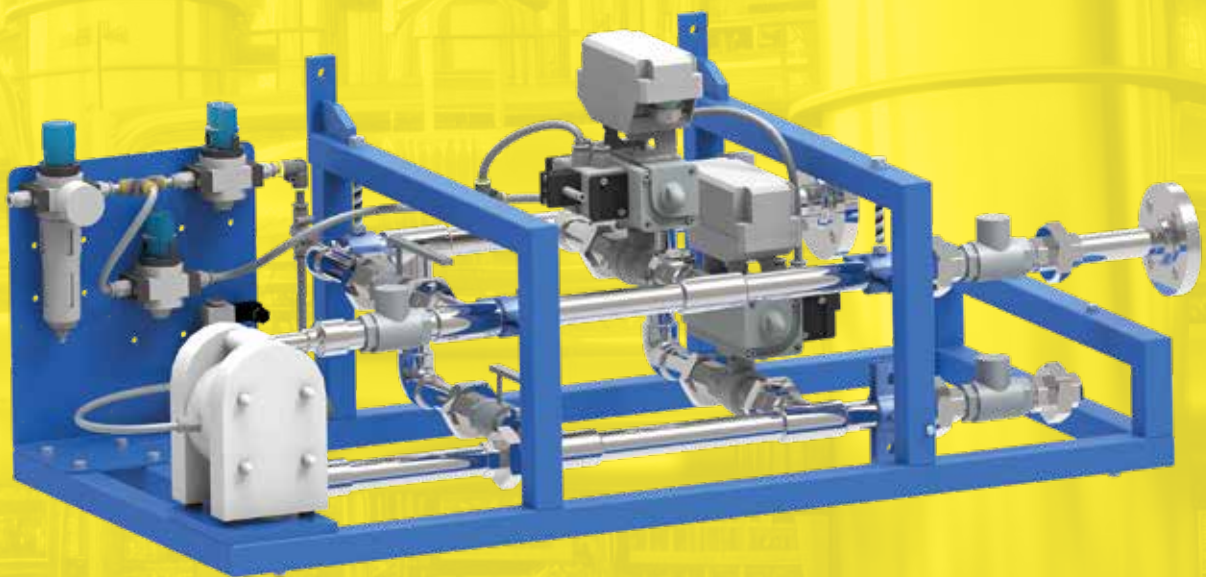


# PUMPS FLOW SOLUTIONS ACCESSORIES

2025 | 1



## » All about your flow®

*We began our journey in 1980 in Kungälv, a small town on the Swedish west coast, as a family company with an ambition to one day become a global player on the pump market.*

Since the foundation, we have taken pride in delivering a wealth of knowledge and passion for pumps to the industry, whilst supplying a wide range of premium products for various industrial applications.

Over the years, the company has developed into a global Tapflo Group with branches and distributors present in nearly every region of the world.

One thing did not change - we are still a family company.

Our solutions are designed and manufactured in Europe and distributed globally to offer the best service and flow solutions to our customers for a variety of applications.

Our values, Commitment, Quality and Simplicity are reflected both in our product and business approach.



**For fast and flexible service and high-quality products readily available worldwide, choose Tapflo.**

## Quality commitment

At Tapflo we are simply committed to quality. As a result, our production standards, as well as products quality, comply with various globally recognised certification and quality control standards. The Tapflo manufacturing process is certified according to ISO 9001:2015, confirming that our processes are appropriate, effective, customer-focused and continuously improved.



## Tapflo values

Our culture is concluded in Our values

### Commitment

We are different from our competitors because of our willingness to exceed the customers' expectations, move fast and be flexible. Our culture is based on the spirit of togetherness, enthusiasm and integrity. We come from all over the world but we share the same values and we respect each other. We are committed.

### Quality

We understand that the quality in our work is never better than the weakest link, that's why we focus on every small detail. We share a common passion for continuously finding more efficient and effective ways to provide value to our customers. As a manufacturer we have control of the complete process both in terms of our products and the way we operate internally. That is why we manufacture the highest quality pumps in our segment.

### Simplicity

We have a saying, "Simple is art" which means we try to find smooth and uncomplicated solutions in everything. By keeping it simple we can focus on the essential, like designing uncomplicated pumps with few components. For us it is a key to success; strive to simplify what is complex.

# Air Operated Diaphragm Pumps

CE UK CA EAC AT Ex FDA REACH Compliant ROHS Compliant EN 10204

Certificates may vary depending on series and material execution of particular product

## Features & Benefits

- » run dry without damage
- » thorough flow control
- » self-priming up to 5 m
- » air operated - no electricity is needed
- » solid, strong construction
- » dead head capability
- » lubrication-free air system



### PLASTIC

- » the widest variety of options on the market
- » small number of components
- » for almost any kind of liquid
- » robust design

**Applications:** food, chemicals, pulp, paper, surface treatment, print, paint, water treatment, electronics

**Material:** PE, PTFE

**Max. capacity:** 820 l/min

**Max. pressure:** 8 bar



### METAL

- » great mechanical strength
- » good chemical resistance
- » low amount of parts for quick and easy maintenance
- » versatility

**Applications:** ceramic, chemicals, construction, mining, print, paint, workshop

**Material:** aluminium, cast iron, AISI 316L stainless steel, PTFE coated aluminium

**Max. capacity:** 820 l/min

**Max. pressure:** 8 bar



### SANITARY

- » food grade approved (FDA, EC1935, USP VI)
- » gentle product handling
- » CIP/SIP capable
- » flap valves for big solids handling

**Applications:** dairy, grocery, bakery, brewery, food, beverage, hygiene, pharmaceutical, cosmetics

**Material:** AISI 316L stainless steel

**Max. capacity:** 820 l/min

**Max. pressure:** 8 bar



### ASEPTIC

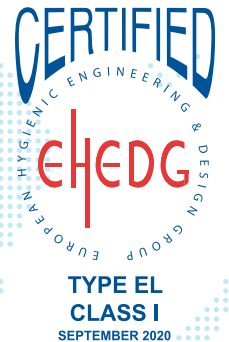
- » fully drainable and cleanable - no dead ends
- » EHEDG approved
- » extra fine internal surface finish
- » CIP/SIP capable

**Applications:** food, dairy, cosmetics, pharmaceutical, biotech

**Material:** AISI 316L stainless steel

**Max. capacity:** 400 l/min

**Max. pressure:** 8 bar





## FILTER PRESS

- » self-priming and self-regulating
- » pressure transmission up to 2 : 1
- » optimal pump operation during the filter press filling process
- » dead head capability
- » robust design

**Applications:** waste water treatment, galvanic, oil filtration

**Material:** PE, PTFE, aluminium, cast iron, AISI 316L stainless steel, PTFE coated aluminium

**Max. capacity:** 400 l/min

**Max. pressure:** 12/16 bar (depending on the size of pump)



## STEINLE FILTER PRESS

- » self-regulating for filter press applications
- » high pressure transmission up to 3.3 : 1
- » external electronic air valve
- » solid construction for heavy duties

**Applications:** automotive, chemicals, paper, filter press applications, porcelain, glass and ceramics

**Material:** mild steel, AISI 316 stainless steel, PP

**Max. flow:** 18 m<sup>3</sup>/h

**Max. pressure:** 24 bar



## POWDER

- » convenient and safer than manual powder handling
- » hermetic pump design
- » powder fluidization with every stroke
- » simple design

**Applications:** sintering powder, carbon black and silicones

**Material:** PTFE coated aluminium

**Max. pressure:** 8 bar



## PHARMACEUTICAL

- » extremely easy to maintain
- » inert materials no contamination of the pumped product
- » USP class VI approved materials
- » sanitary design smooth internal surfaces

**Applications:** biotech, pharmaceutical

**Material:** PP, PTFE

**Max. capacity:** 570 l/min

**Max. pressure:** 8 bar



## INTELLIGENT - LOW AIR CONSUMPTION - PLASTIC, METAL, SANITARY

- » electrical stroke feedback
- » low noise and pulsation
- » improved lifespan & maintenance
- » control simplification
- » any existing Tapflo air operated diaphragm pump can be fitted with LEAP

**Applications:** dairy, grocery, bakery, brewery, food, beverage, hygiene workshop, print, paint, mining, construction, ceramic, chemicals, pulp, paper, electronics, surface treatment, water treatment, pharmaceutical, cosmetics

**Material:** PE, PTFE, aluminium, cast iron, AISI 316L stainless steel, PTFE coated aluminium

**Max. capacity:** 470 l/min

**Max. pressure:** 8 bar

# Electrically Operated Diaphragm Pumps



Certificates may vary depending on series and material execution of particular product



## PLASTIC, METAL, SANITARY

- » safe, simple and easy to use and maintain
- » run dry without damage
- » cost effective drive
- » self-priming from dry suction pipe
- » lack of rotary seals

**Applications:** hygienic, industrial, chemicals, surface conditioning, water treatment, paint, print, pulp, paper, mechanical, varnish

**Material:** PE, PTFE, aluminium, cast iron, 316L stainless steel

**Max. capacity:** 220 l/min

**Max. pressure:** 4 bar

# Pumps with built-on dampeners



## TK/TEK - AODD/EODD

- » protection against pulsation for all kinds of instruments in piping system
- » minimized vibrations and water hammer effects
- » no piping or additional connections are required



## SET - EXTANSION OF TK

- » compact and ready to use integrated set
- » solution for larger pump than T200 with a built-on dampener
- » available in both vertical and horizontal arrangement

# Pulsation Dampeners



Certificates may vary depending on series and material execution of particular product



**NEW**



## DT - ACTIVE PULSATION DAMPENERS

- » the most efficient way to remove pressure variations
- » fully air operated
- » self-regulating
- » optimized pump performance and reduced maintenance costs
- » protection of all kinds of instruments in pipe system

**Material:** PE, PTFE, aluminium, AISI 316 stainless steel

**Max. pressure:** 16 bar

## DPT - PASSIVE PULSATION DAMPENER

- » the most efficient way to remove pressure variations
- » fully air operated
- » certified design- European PED directive 2014/68/EU
- » ensures the protection of various instruments within a pipe system

**Material:** AISI 304 stainless steel

**Hose material:** NR, NBR, EPDM, CSM, NR FDA, NBR FDA, EPDM FDA

**Max. air pressure:** 15 bar

# Hose Pumps



Certificates may vary depending on the material execution of a particular product.

## Features & Benefits

- » self-priming with superior suction capacity up to -0.9 bar
- » adjustable flow and precise dosing accuracy of approximately  $\pm 5\%$
- » suitable for efficiently pumping highly abrasive, corrosive and viscous liquids containing particles
- » safe to run dry

**NEW**



### PT HIGH PRESSURE

- » biggest variety of options on the market
- » up to 15 bar operating pressure
- » easy hose removal and pump maintenance.
- » suitable for high viscous and solid containing liquids

**Applications:** paint, waste water treatment, food, paper mills, chemicals, biogas, recycling, mining, building

**Hose material:** NR, NBR, EPDM, CSM, NR FDA, NBR FDA, EPDM FDA

**Max. capacity:** 60 m<sup>3</sup>/h

**Max. discharge pressure:** 15 bar

**NEW**



### PTL LOW PRESSURE

- » compact and accurate
- » advanced roller setting technology
- » sealed pump casing

**Applications:** food, beverage, cosmetics, chemicals, pharmaceutical, water treatment

**Hose material:** NR, NBR, EPDM, CSM, NR FDA, NBR FDA, EPDM FDA, silicone

**Max. capacity:** 5 m<sup>3</sup>/h

**Max. discharge pressure:** 4 bar

**NEW**



### CLEANPRO - CIP CAPABLE

- » does not damage the pumped fluid
- » FDA and EC1935 certified hoses, sanitary clamp and thread connections
- » only the hose as a wear part and no rotary seals, maintenance costs remain low
- » CIP capable

**Applications:** food, beverage, pharmaceutical, cosmetics

**Hose material:** NR FDA, NBR FDA, EPDM FDA

**Max. capacity:** 12 m<sup>3</sup>/h

**Max. discharge pressure:** 10 bar

# Centrifugal Pumps

CE UK EAC AT Ex FDA REACH Compliant ROHS Compliant EN 10204

Certificates may vary depending on the material execution of a particular product.

## Features & Benefits

- » easy maintenance, low downtime
- » wide range of options and applications
- » few parts, easy to handle



### CTX HIGH PERFORMANCE (CTX H & CTX I)

- » high efficiency
- » robust design
- » adjustable impeller
- » single or double mechanical seal with various seal plans

**Applications:** food, beverage, mechanical, demineralization, paint, paper mills, water treatment, heat exchangers, research, pharmaceutical, surface treatment

**Material:** AISI 316L stainless steel

**Max. flow:** 140 m<sup>3</sup>/h

**Max. head:** 84 m



### CTXS SELF-PRIMING (CTXS H & CTXS I)

- » self-priming - up to 5 m
- » hygienic and industrial design
- » high efficiency
- » easy to adapt in existing CTX pump

**Applications:** food, beverage, water treatment, heat exchangers, surface treatment

**Material:** AISI 316L stainless steel

**Max. flow:** 75 m<sup>3</sup>/h

**Max. head:** 60 m



### CT STANDARD (CTH & CTI)

- » easily cleanable
- » competitive price-quality ratio
- » handling liquids with particles

**Applications:** food, beverage, mechanical, water treatment

**Material:** AISI 316 stainless steel

**Max. flow:** 74 m<sup>3</sup>/h

**Max. head:** 56 m



### CTS SELF-PRIMING (CTS H & CTS I)

- » easy installation and maintenance
- » self-priming
- » ideal for highly aerated liquids
- » no need to re-fill after each use

**Applications:** food, beverage, water treatment, heat exchangers, surface treatment

**Material:** AISI 316L stainless steel

**Max. flow:** 60 m<sup>3</sup>/h

**Max. head:** 40 m



## CTV VERTICAL

- » leakage free & safe dry running
- » replacing self-priming pumps
- » handling liquids with particles possible (up to Ø 6 mm)

**Applications:** surface treatment, galvanic, waste water treatment, chemicals

**Material:** PP, PVDF, AISI 316L stainless steel

**Max. flow:** 33 m<sup>3</sup>/h

**Max. head:** 31 m



## CTP PLASTIC

- » safety drain on air side of the pump
- » no metal parts in contact with the liquid
- » handling liquids with particles possible, even with metallic solids

**Applications:** hot medias, circulation of pickling baths and degreasing processes

**Material:** PP, PVDF

**Max. flow:** 28 m<sup>3</sup>/h

**Max. head:** 19 m



## CTM MAGDRIVE

- » no leakage magnetic power transmission
- » seal less pump
- » hermetic system
- » economical operation

**Applications:** OEM installation, surface treatment, galvanic, demineralization

**Material:** PP, PVDF

**Max. flow:** 27 m<sup>3</sup>/h

**Max. head:** 20 m

# Filter Units



Certificates may vary depending on the material execution of a particular product.



## FT FILTERS

- » wide range of filtering volume for tanks capacity from 200 litres (for FT80) to 6000 litres (for FT355)
- » changeable inserts
- » robust construction

**Applications:** surface treatment, precious metal plating, chemicals, paints, varnishes, water treatment

**Material:** PP

# Submersible Pumps



Certificates may vary depending on the material execution of a particular product.



## SUBMERSIBLE (DRAINAGE, SEWAGE, DEWATERING, SLUDGE & SLURRY)

- » pump body and motor made in robust materials
- » automatic level control
- » effective motor cooling
- » protection against reverse phase
- » overheating protection

**Applications:** construction, civil engineering, mining, sewage, waste water treatment, general pumping purposes

**Material:** cast/ductile iron, ABS, coated steel

**Max. flow:** 147 m<sup>3</sup>/h

**Max. head:** 40 m

# Lobe Pumps\*



EN 10204

Certificates may vary depending on the material execution of a particular product.

**NEW**



## LPX LOBE

- » bi-directional flow, horizontal or vertical mounting.
- » easy to disassemble and reassemble
- » energy efficient and easily cleaned, maintained and repaired
- » easily upgradable from single do double mechanical seal

**Applications:** bakery, beverage, dairy, chocolate, meat packing, canning, confectionery, cosmetics, pharmaceutical, chemicals

**Material:** AISI 316L stainless steel

**Max. flow:** 82 m<sup>3</sup>/h

**Max. head:** 100 m

\* offered only in: Australia, Austria, Canada, Denmark, France, Germany, Ireland, Italy, Japan, Netherlands, Portugal, South Africa, Spain, Sweden, United Kingdom

# Accessories

AT 



## HYGIENIC VALVES

- » high-quality
- » serialized for full traceability
- » TÜV NORD ISO 9001:2015 approved manufacturing process

**Applications:** food, dairy, wine, beer, cosmetics, pharmaceutical, allied sanitary industries

**Material:** AISI 316L stainless steel, AISI 304L stainless steel, Hastelloy



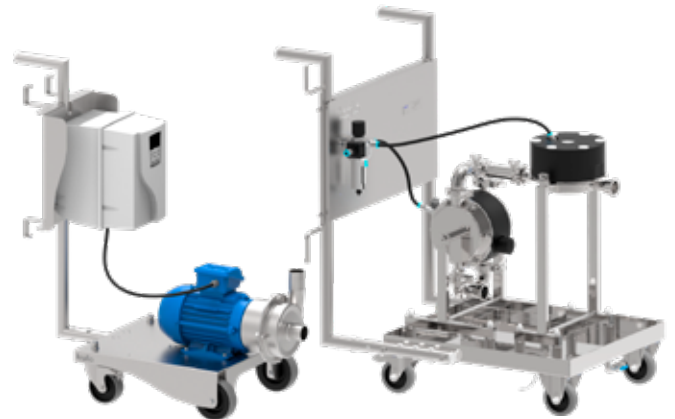
## CONTROL & MONITORING SYSTEMS

- » **Guardian system™** - a fully pneumatic monitoring system, protects pump from dry running, deadheading or diaphragm breach/failure.
- » **Pneumatic batch control** - fully programmable, allow to set the batch amount or batching time.
- » **Pneumatic level control** - a fully pneumatic automatic level system used to maintain set liquid levels within a sump/tank.
- » **Stroke counter** - a stroke to volt free contact is available for integration with PLC systems.
- » **Life counter** - allow to control servicing and implement a preventative maintenance routine.



## FILTER REGULATOR & NEEDLE VALVE KIT

- » the ability to run the pump with the right air quality and optimum pressure and speed to save energy
- » the service life of pump components is increased



## MOBILE UNITS (HYGIENIC & INDUSTRIAL)

- » the best solution for spreading technological processes
- » allows easy movement to various locations
- » complete "made to measure" mobile units, ready to execute the user's technological process
- » with the majority of Tapflo pumps range

# Industrial Mixers

NEW

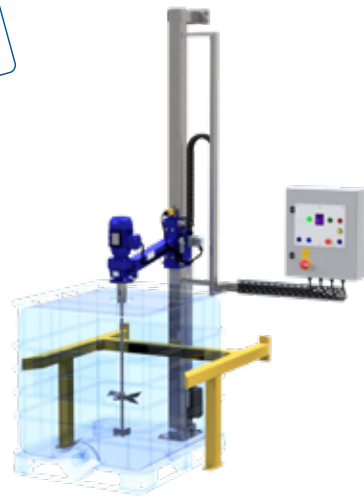


## IBC MIXERS

- » efficiently mixes designated medium in IBC containers
- » ensures a high level of safety, mixer will never run when raised
- » complete solution, ready for operation
- » constant tracing and recording of operation parameters
- » small in size, lightweight, and well-thought-out construction

**Applications:** paint, glue, chemicals, water treatment, general industry

NEW



## IBC MIXING STATION

- » ensures a high level of safety, mixer will never run when raised or when IBC is not positioned
- » operated from the control panel, including actuator for raising the mixer
- » allows setting mixing time and do other work in the meantime
- » can be used for mixing various products

**Applications:** paint, glue, chemicals, water treatment, general industry

NEW



## DRUM MIXERS

- » suitable for most of the commonly used drums (ex. 200 litres)
- » dedicated drum lid, clamp or wall support available
- » light and easy to move

**Applications:** paint, glue, chemicals, water treatment, general industry



## PNEUMIXER

- » no paddles, no air entrainment, no shear
- » closed vessel mixing system
- » suits all containers up to 1000 litres IBC
- » one device covers pumping & mixing solution of the process

**Applications:** paint, ink, surface treatment, waste water treatment

# Tapflo Solutions™



## HVS HIGH VISCOSITY SYSTEM

- » allows quick unloading of the drums (100 l/min of the tomato concentrate)
- » supplied with a scrapping or inflated lid for drums, providing high efficiency in unloading and minimizing the volume of the left-over liquid
- » removes up to 99% of the product from drum
- » results in high process safety and time-saving benefits

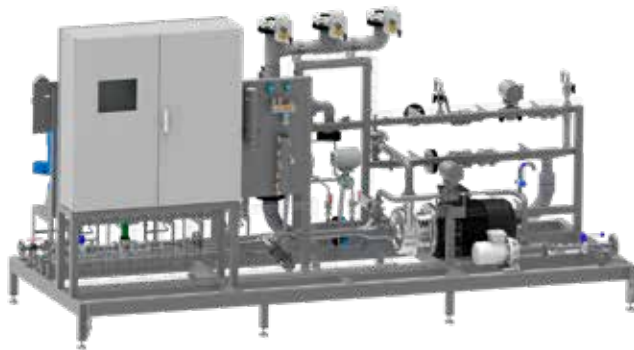
**Applications:** food, beverage, cosmetics, pharmaceutical, general industry



## SLES MIXING & DILUTION UNIT

- » precise diluting of SLES or other surfactant to the required concentration and flow rate
- » immediate operation gives homogenous and stable in time liquid
- » brings energy, time and space savings (compared to other dilution methods)
- » continuous or batch supply of SLES solution at a given concentration
- » constant tracing and recording of operation parameters
- » small in size, lightweight and well-thought-out construction

**Applications:** liquid detergents, soaps, shampoos, dishwashing liquids



## IN-LINE BLENDING SYSTEM

- » allows for precise mixing of various ingredients by the recipe.
- » the blending and dilution are made immediately within the system, and it gives a final product at the system outlet
- » provides diluted liquids at the required flow rate
- » results in high process safety and time-saving benefits

**Applications:** liquid detergents, cosmetics, chemicals



## FILLING MACHINE

- » provides high precision and repeatability of the process
- » suitable for filling various containers with various liquids
- » generates reports and comes with weigh scale legalization

**Applications:** food, liquid detergents, chemicals



## ELECTRONIC BATCH CONTROLLER

- » allows for automated dosing of a required volume of the liquid
- » shows the batch progress of flow rate in desired units (e.g. litres per minute)
- » comes with a totalizer useful for pump maintenance

**Applications:** every branch of the industry



## TANK UNITS

- » all-in-one pumping solution with integrated Tapflo diaphragm pump
- » built-on air treatment system
- » few components, easy installation and long-life design

**Applications:** food, beverage, chemicals process industry, water treatment, household chemicals, cosmetics



## AODD INSULATING COVERS

- » pumps can be sound or thermally insulated.
- » for the harshest outdoor conditions, pump heating in the cover is also available



## WATERING SYSTEM

- » allows both mixing and pumping
- » suitable for dilution of the powders or fertilizers
- » easy in operation, comes with a hatch opening and suitable handles
- » supplied with a control panel allowing intuitive control of the system

**Applications:** agriculture, water treatment, chemicals

## » All about your flow®



### Service & Maintenance

Professional service is a natural part of our commitment to the customer. We offer an on-site service as well as at our service centres.

### Customised solutions & systems

We deliver complete systems with peripherals such as trolleys, tanks, hoses, valves and fittings. Having our own production lines allows us to offer solutions that are even more sustainable and efficient.



### Stock

In our warehouses we stock a wide range of different pump models and spare parts for immediate delivery.

### Training

We offer customized training in pump technology, service and preventive maintenance.



## Canada

101-43 Keefer Crt | Hamilton, ON

Tel: +1 514 409 8380

E-mail address: [office@tapflo.ca](mailto:office@tapflo.ca)

*We began our journey in 1980 in Kungälv, a small town on the Swedish west coast, as a family company with an ambition to one day become a global player on the pump market.*

*Since the foundation, we have taken pride in delivering a wealth of knowledge and passion for pumps to the industry, whilst supplying a wide range of premium products for various industrial applications.*

*Over the years, the company has developed into a global Tapflo Group with branches and distributors present in nearly every region of the world.*

*One thing did not change - we are still a family company.*

## Tapflo products and services are available worldwide.

Tapflo is represented by own Tapflo Group Companies and carefully selected distributors assuring highest Tapflo service quality for our customers' convenience.

AUSTRALIA | AUSTRIA | AZERBAIJAN | BAHRAIN | BELGIUM | BOSNIA | BRAZIL | BULGARIA | CANADA | CHILE | CHINA | COLOMBIA | CROATIA | CZECH REPUBLIC | DENMARK | ECUADOR | EGYPT | ESTONIA | FINLAND | FRANCE | GEORGIA | GERMANY | GREECE | HONG-KONG | HUNGARY | ICELAND | INDIA | INDONESIA | IRELAND | ISRAEL | ITALY | JAPAN | JORDAN | KAZAKHSTAN | KUWAIT | LATVIA | LIBYA | LITHUANIA | MACEDONIA | MALAYSIA | MEXICO | MONTENEGRO | MOROCCO | NETHERLANDS | NEW ZEALAND | NORWAY | OMAN | PHILIPPINES | POLAND | PORTUGAL | QATAR | ROMANIA | SAUDI ARABIA | SERBIA | SINGAPORE | SLOVAKIA | SLOVENIA | SOUTH AFRICA | SOUTH KOREA | SPAIN | SWEDEN | SWITZERLAND | TAIWAN | THAILAND | TURKEY | UKRAINE | UNITED ARAB EMIRATES | UNITED KINGDOM | USA | UZBEKISTAN | VIETNAM

## Tapflo Group Companies

### Australia

Tapflo Oceania (Pty) Ltd.  
Tel: +61 1800303633  
[sales@tapflo.com.au](mailto:sales@tapflo.com.au)

### China

Tapflo (Wuxi) Pumps Co. Ltd.  
Tel: +86 51082417072  
[sales@tapflo.cn](mailto:sales@tapflo.cn)

### Ireland

Tapflo Ireland Ltd.  
Tel: +353 12011911  
[info@tapflo.ie](mailto:info@tapflo.ie)

### Poland

Tapflo Sp. z o.o.  
Tel: +48 609 995 500  
[info@tapflo.pl](mailto:info@tapflo.pl)

### Spain

Tapflo Ibérica S.L.  
Tel: +34 918093182  
[avives@tapfloiberica.es](mailto:avives@tapfloiberica.es)

### Uzbekistan

Tapflo Uzbekistan  
Tel: +998 712370940  
[sales@tapflo.uz](mailto:sales@tapflo.uz)

### Austria

Tapflo GmbH  
Tel: +43 73227292910  
[sales@tapflo.at](mailto:sales@tapflo.at)

### Croatia

Tapflo d.o.o.  
Tel: +385 914884666  
[sales@tapflo.hr](mailto:sales@tapflo.hr)

### Italy

Tapflo Italia S.r.l.  
Tel: +39 0362306528  
[info@tapfloitalia.com](mailto:info@tapfloitalia.com)

### Qatar

Tapflo Gulf General Trading Co. L.L.C  
Tel: +971 58 582 3630  
[sales@tapfloqatar.com](mailto:sales@tapfloqatar.com)

### South Africa

Tapflo (Pty) Ltd.  
Tel: +27 317015255  
[sales@tapflo.co.za](mailto:sales@tapflo.co.za)

### Bahrain

Tapflo Gulf General Trading Co. L.L.C  
Tel: +971 58 582 3630  
[sales@tapfloqatar.com](mailto:sales@tapfloqatar.com)

### Czech Republic

Tapflo s.r.o.  
Tel: +420 513033920  
[tapflo@tapflo.cz](mailto:tapflo@tapflo.cz)

### Japan

Tapflo Japan K.K.  
Tel: +81 362403510  
[tapflojp@tapflo.co.jp](mailto:tapflojp@tapflo.co.jp)

### Romania

S.C. Tapflo Rom. S.r.l.  
Tel: +40 213451255  
[sales@tapflo.ro](mailto:sales@tapflo.ro)

### Sweden

Tapflo AB  
Tel: +46 (0)30314050  
[info@tapflo.com](mailto:info@tapflo.com)

### Baltic States

Tapflo SIA  
Tel: +371 67472205  
[sales@tapflo.lv](mailto:sales@tapflo.lv)

### Denmark

Tapflo Danmark ApS  
Tel: +45 36454600  
[info@tapflo.dk](mailto:info@tapflo.dk)

### Kazakhstan

Tapflo LLP  
Tel: +7 727 327 83 47  
[sales@tapflo.kz](mailto:sales@tapflo.kz)

### Saudi Arabia

Tapflo Gulf General Trading Co. L.L.C  
Tel: +971 58 582 3630  
[sales@tapfloqatar.com](mailto:sales@tapfloqatar.com)

### Turkey

Tapflo Makina Ltd.  
Tel: +90 2164673311  
[sales@tapflo.com.tr](mailto:sales@tapflo.com.tr)

### Belgium

Tapflo Benelux B.V.  
Tel: +31 (0) 6 21850664  
[info@tapflo.nl](mailto:info@tapflo.nl)

### France

Sarl Tapflo France  
Tel: +33188788240  
[info@tapflo.fr](mailto:info@tapflo.fr)

### Kuwait

Tapflo Gulf General Trading Co. L.L.C  
Tel: +971 58 582 3630  
[sales@tapfloqatar.com](mailto:sales@tapfloqatar.com)

### Serbia

Tapflo d.o.o.  
Tel: +381 21445808  
[sales@tapflo.rs](mailto:sales@tapflo.rs)

### Ukraine

Tapflo LLC  
Tel: +380 442226844  
[sales@tapflo.ua](mailto:sales@tapflo.ua)

### Bulgaria

Tapflo EOOD  
Tel: +359 886 124 937  
[office@tapflo.bg](mailto:office@tapflo.bg)

### Hungary

Tapflo Kft.  
Tel: +36 30148 8551  
[office@tapflo.hu](mailto:office@tapflo.hu)

### Netherlands

Tapflo Benelux B.V.  
Tel: +31 (0) 6 21850664  
[info@tapflo.nl](mailto:info@tapflo.nl)

### Slovakia

Tapflo s.r.o.  
Tel: +421 911137883  
[tapflo@tapflo.sk](mailto:tapflo@tapflo.sk)

### United Arab Emirates

Tapflo Gulf General Trading Co. L.L.C  
Tel: +971 58 582 3630  
[sales@tapfloqatar.com](mailto:sales@tapfloqatar.com)

### Canada

Tapflo Canada  
Tel: +1 514 409 8380  
[office@tapflo.ca](mailto:office@tapflo.ca)

### India

Tapflo Fluid Handling India Pvt Ltd.  
Tel: +91 9028574063  
[enquiry@tapflo.in](mailto:enquiry@tapflo.in)

### Oman

Tapflo Gulf General Trading Co. L.L.C  
Tel: +971 58 582 3630  
[sales@tapfloqatar.com](mailto:sales@tapfloqatar.com)

### Slovenia

Tapflo d.o.o.  
Tel: +386 68613474  
[sales@tapflo.hr](mailto:sales@tapflo.hr)

### United Kingdom

Tapflo (UK) Ltd.  
Tel: +44 2380252325  
[sales@tapflo pumps.co.uk](mailto:sales@tapflo pumps.co.uk)



If your country is not listed please visit [www.tapflo.com/en/contact](http://www.tapflo.com/en/contact)