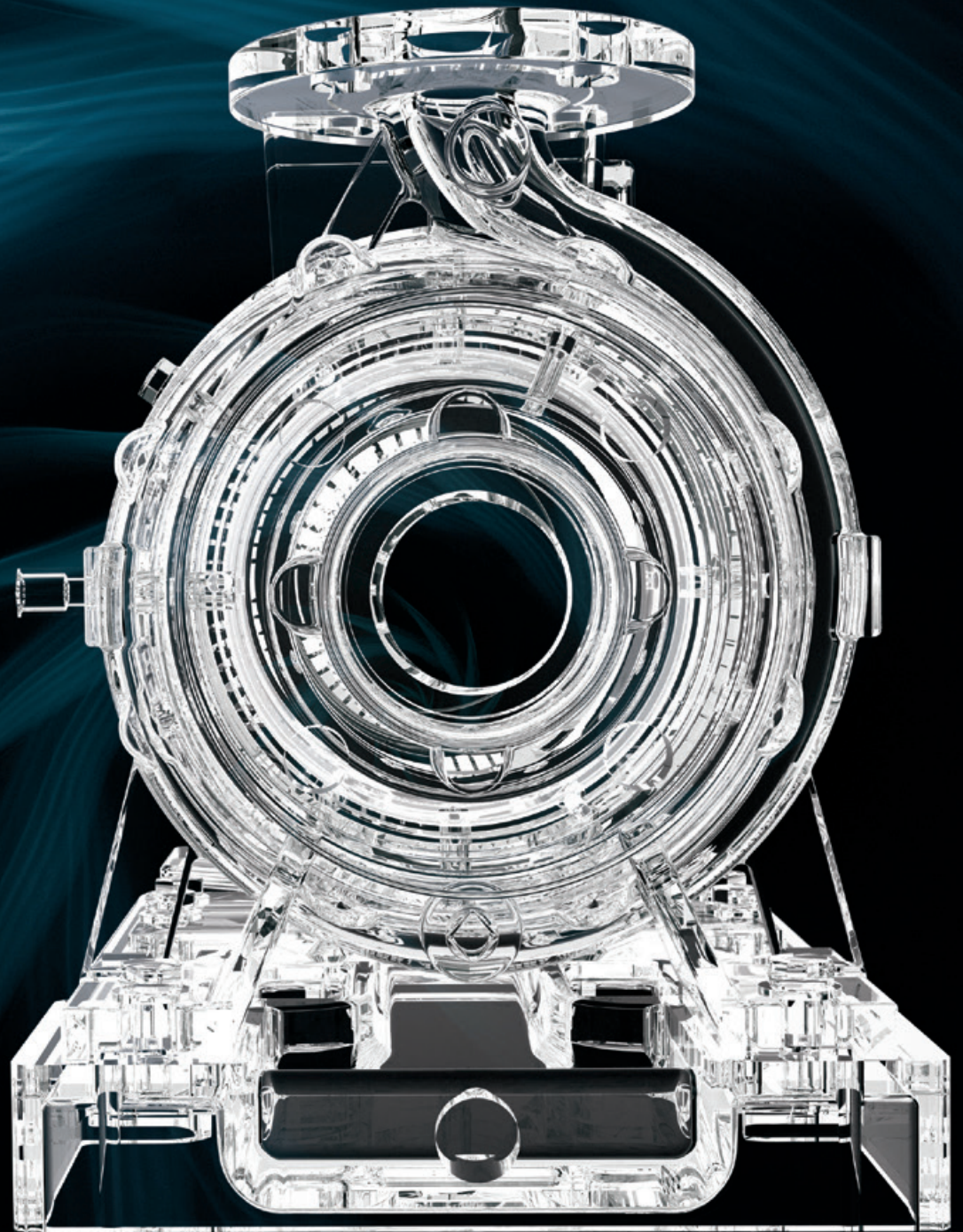


UTS
—
evo





UTS evo

// EVOLUTION FOR US IS A NATURAL MATTER //

Many geniuses and luminaries, such as Leonardo Da Vinci, have spent their lives seeking perfection and reflecting it in their projects, through an intensive study of the divine proportion.

Using the same philosophy, CDR also pursue the perfection without compromises in its products.

This is the fundamental that connects our milestones, an EVOLUTION that has pushed us to overcome traditional systems, leading us to be among the pioneers of magnetic drive technology.

// ... //

And now A step beyond...

Thanks to the magnetic drive technology, the rotating motion is transmitted without any mechanical contact, simply by exploiting the attraction of the magnetic fields.

Without any joint or sealing, it is achieved a complete liquid containment, eliminating risks of dangerous leakages: the safest system for the operator, as well the most respectful for the environment.

EVolution phase two: we are proud to make a further step beyond and introduce you the new UTS EVO.



UTS
evo



UTS

Bareshaft version
"back pull out".
Baseplate installation
couplings and coupling
guards motor frame B3.

Principles of the magnetic drive (Magnetic drive concept)

The torque is transmitted from the shaft to the impeller thanks to the magnetic coupling: the external magnet (connected to the motor) drives the internal magnet (solid to the impeller), without any direct or physical contact. The transmission of the rotating motion to the impeller is ensured by just magnetic forces of attraction / repulsion between the two magnets. An isolation shell guarantees the complete isolation of the pumping liquid from the external environment.

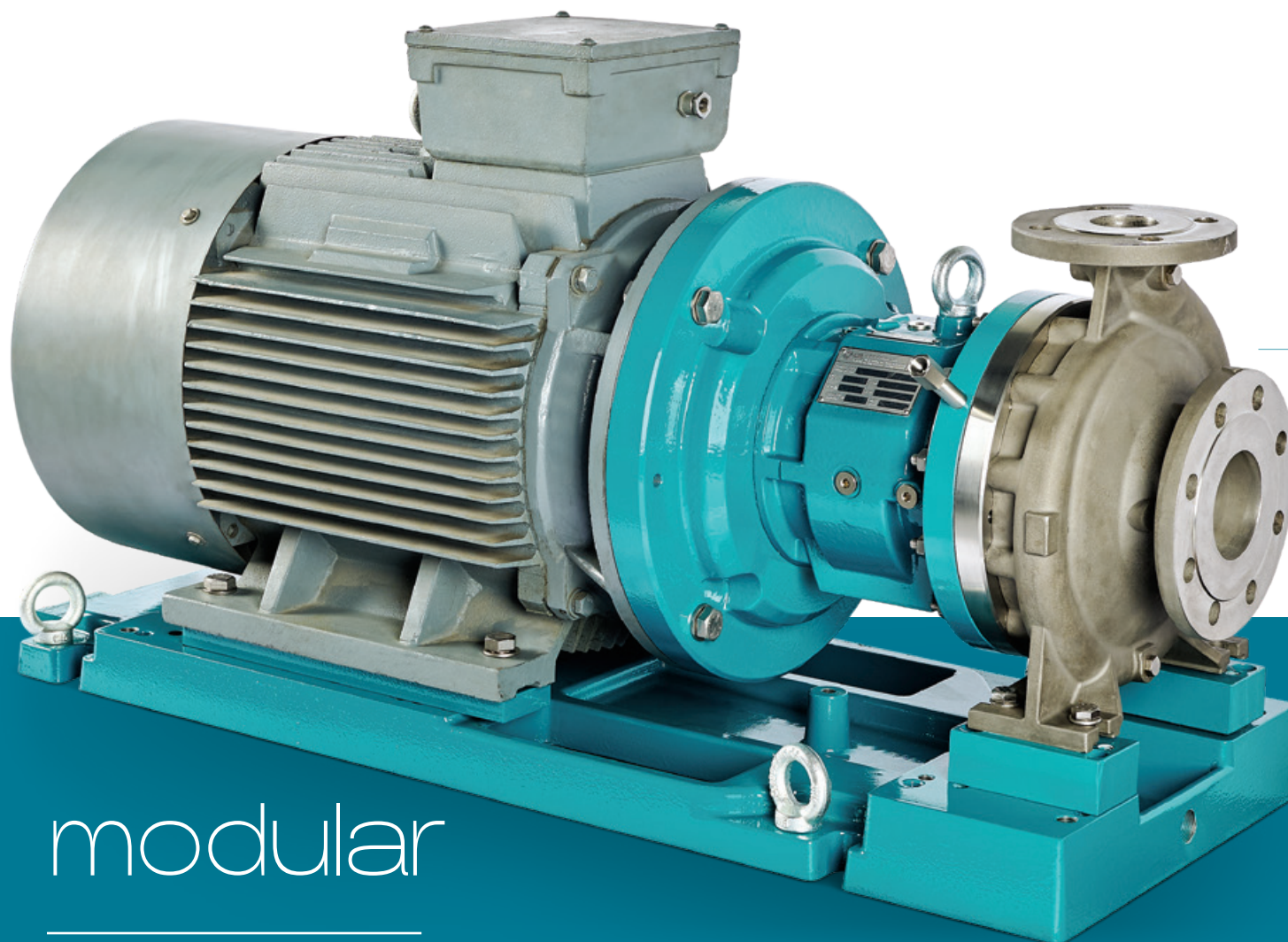
evo

Evolution of the UTS range introduced in 1996, the new UTS is now redesigned and updated (upgraded) with new features that make it more competitive, reliable, with enhancing performances.



UTS-B

Close-coupled version with standard motor frame B5, now also available with motor frame B35 New baseplate.



modular

New magnetic couplings: excellent performance even in case of pumping high viscous liquids.

design

Ideal solution for handling toxic, flammable and dangerous liquids. Thanks to the internal ATEX certification, also suitable to handle non-conductive liquids.



Application Fields



Distillation processes



Raw chemical processes
Operation h24



Fine chemistry processes



Thermoregulation



Tank loading / Unloading



Pharma-Chemical Industries

Painting standards

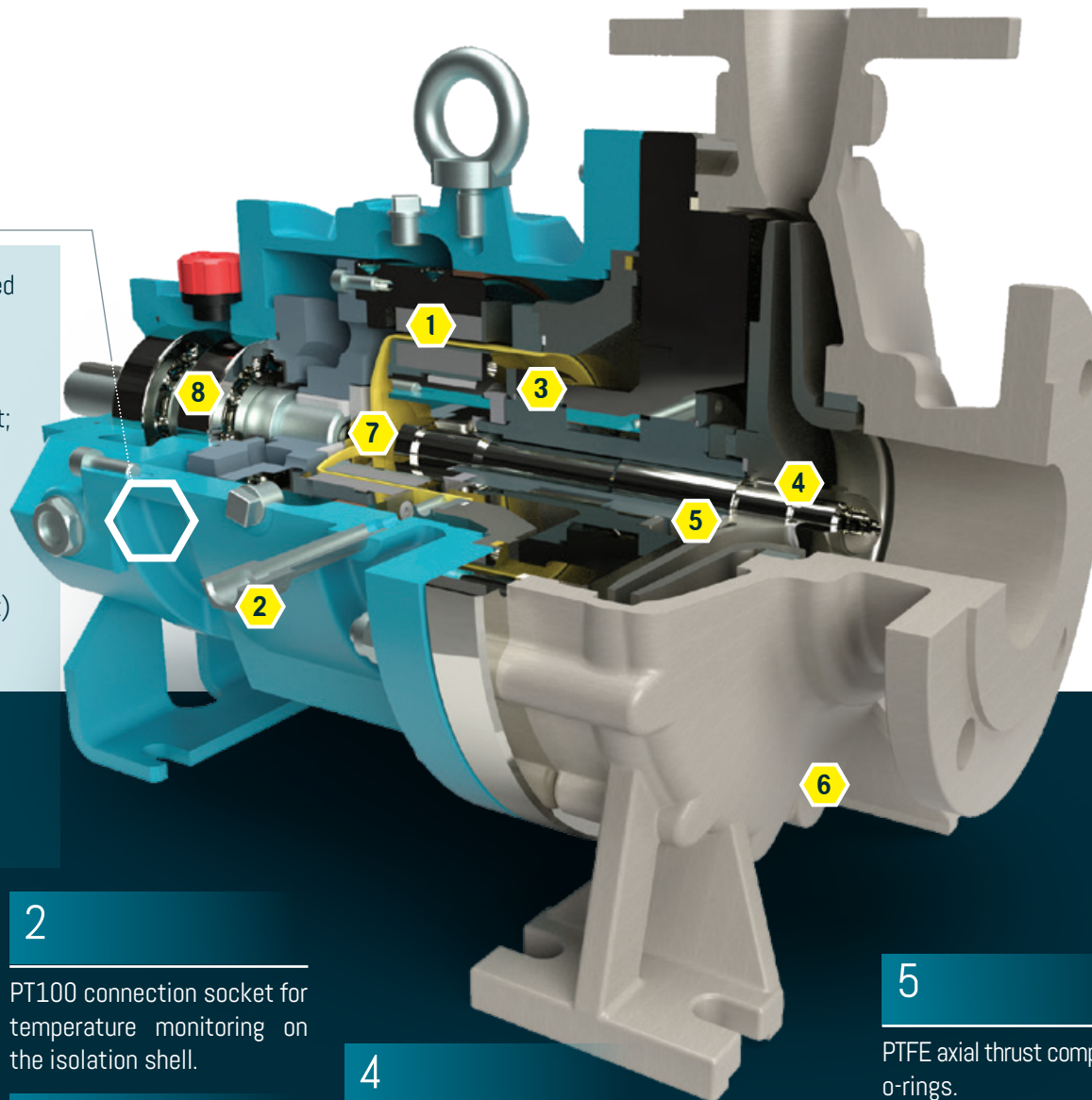
Cast iron surfaces are protected by 3 paint layers (total 240 microns):

- First layer: epoxy primer paint;
- Intermediate layer: Amide-vinyl primer;
- External layer: Epoxy paint;

RAL 5021 color
(all colors available on request)

Painting standard available:

- Standard EN ISO 12944-5 C4M syst. A4.14
- On request EN ISO 12944-5 C4H, C5I, C5M



Internal magnet: different magnet design guarantees improved performances with viscous liquids.

1

Magnets can be in SmCo or NdFeBo according to the temperature of the pumped fluid. Different magnet lengths allow to optimize the power consumption.

2

PT100 connection socket for temperature monitoring on the isolation shell.

3

The internal flushing channels allow the efficient removal of the heat generated by bushes friction and isolation shell eddy currents.

4

The shaft with a central flushing channel allows the correct internal circulation of the liquid, from the rear isolation shell to the front volute casing.

5

PTFE axial thrust compensation o-rings.

6

Threaded casing drain as a standard.

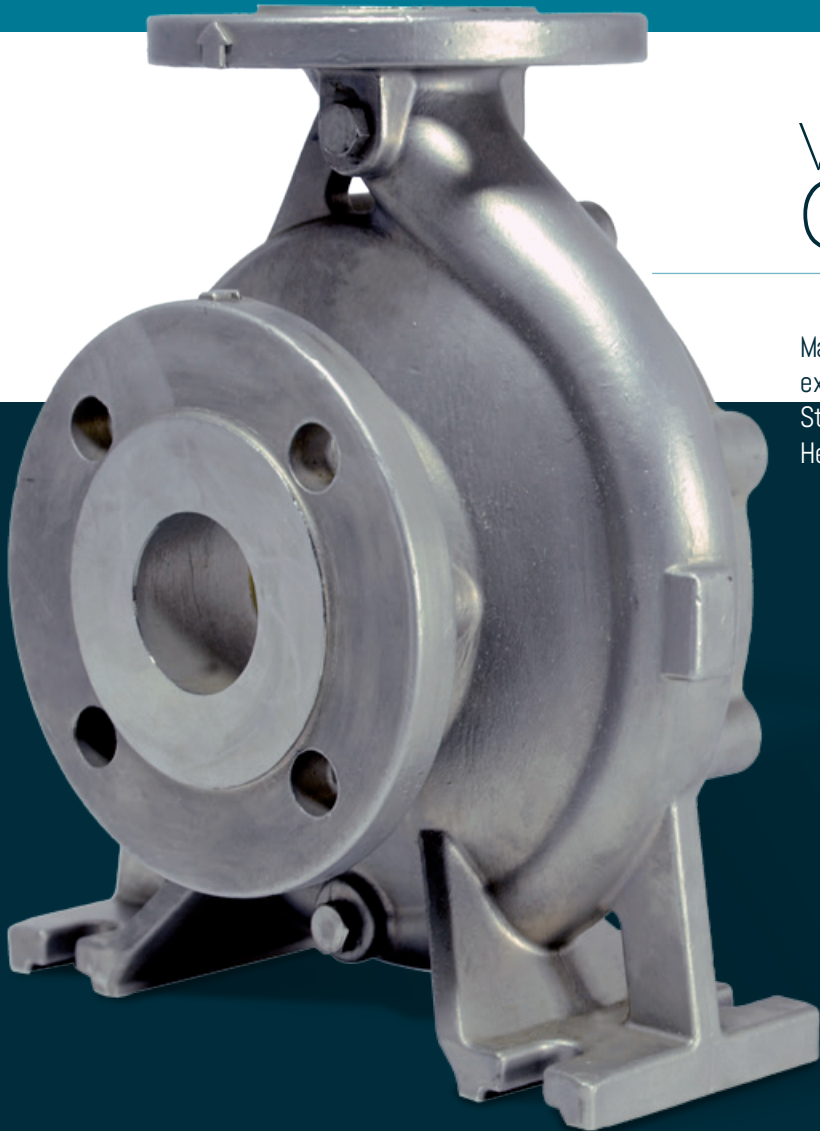
7

An isolation shell in Hastelloy-C 276 guarantees excellent corrosion resistance. With 3 different sizes efficiency is remarkably improved. Also available in ZrO₂.

8

Available on request heatsink and bearing protection with no-contact labyrinth seals.

Construction Details



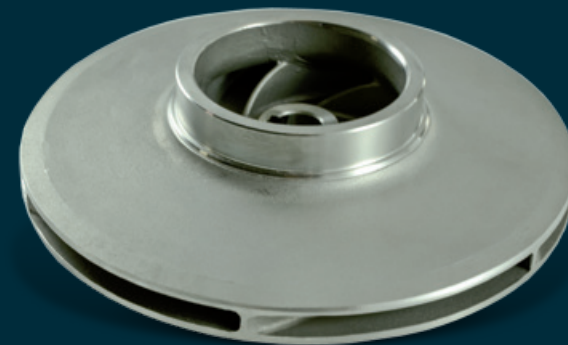
Volute Casing

Made in cast steel AISI 316, it ensure excellent corrosion resistance. Standard threaded drainage. Heating jacket available on request.

Impeller

Made in cast steel AISI 316 (14408), it guarantees excellent and precise vanes profile design and corrosion resistance.

The counter-vanes reduce the axial thrusts and, as consequence, the wear of the internal components.

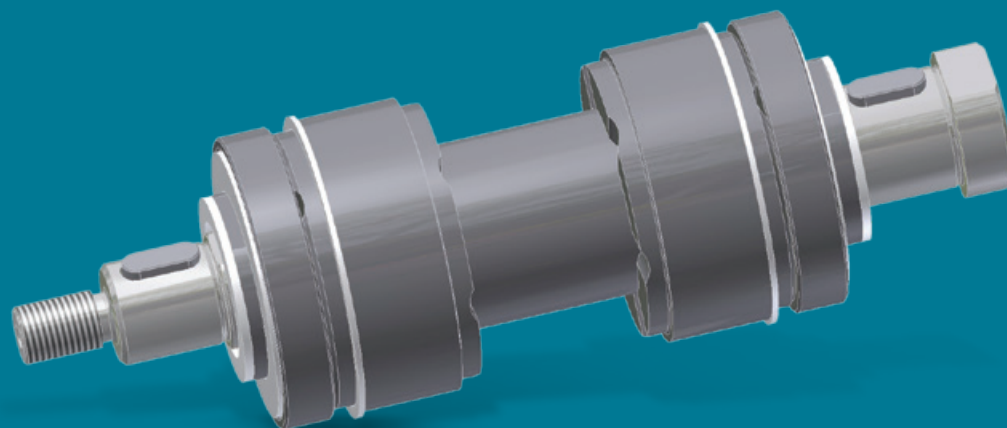




Static and Rotating Bushes

The rotating shaft is mounted inside a SIC bush, supported by 2 static bushes: this configuration guarantees high reliability in continuous service, distributing correctly the axial and radial thrusts.

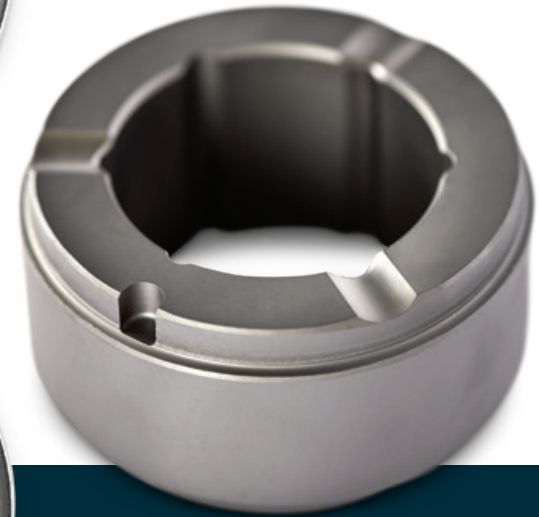
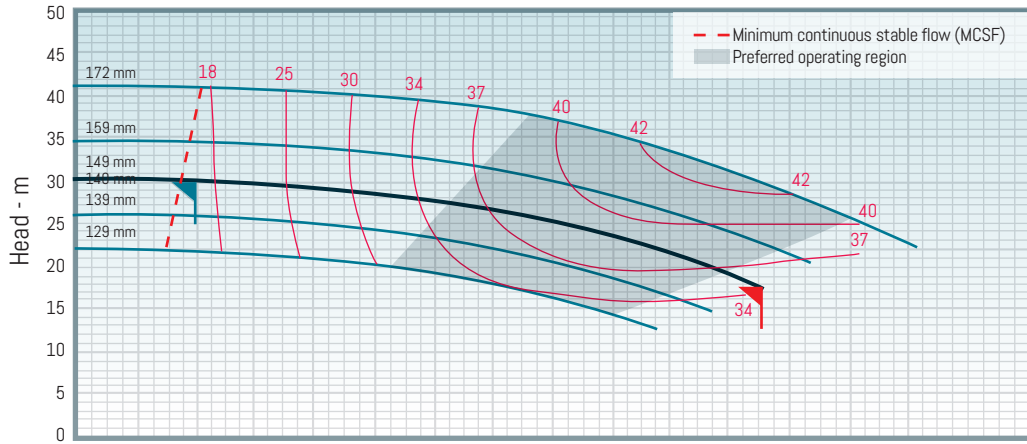
PTFE compensating rings guarantee high resistance to the impeller axial thrusts.



Bushes Support

Flanged bushes support, also available in a pre-assembled kit with bushes already installed, for a quick and safe maintenance.





Diamond Coated SiC bushes:

In case of high risk of dry running, it is available on request a kit (shaft / bushes / axial thrusts) in diamond-coated SiC (RSSiCtm). The surface treatment grants both hardness and a friction reduction of about 80% (0.04 μ s of RSSiC versus 04 - 0.7 μ s of SiC).

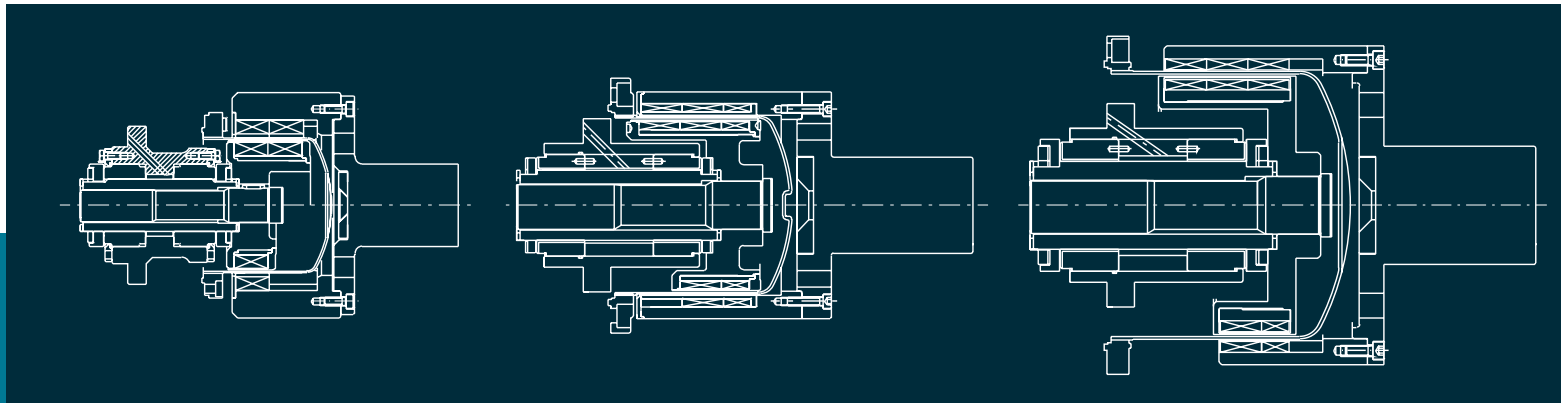
Other critical working conditions on which RSSiC increases reliability and pump life-time are:

- Pumping of low boiling liquids
- Operation at low flow rates (near MCSF): the heat generated by the magnetic coupling (eddy current) is not completely dissipated by the process fluid recirculation
- Operation at high flow rates (beyond the BEP): under these conditions it may occur either a cavitation or a not correct heat dissipation in the rear area of isolation shell, as discharge pressure is low.

New Magnetic Couplings



The redesign of the 3 magnetic couplings improve the efficiency, demanding less energy for the same duty. The Isolation shells are made by flow-forming, to avoid any internal material tension. The flow-breaking seat on the bottom of the isolation shell avoids the formation of liquid vortex inside the pump PT100 connection socket for temperature monitoring as a standard.



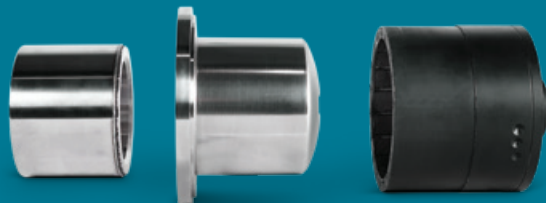
Coupling "125"

Max power 18,5kW*



Coupling "160"

Max power 37kW*



Coupling "250"

Max power 90kW*



*2900 rpm



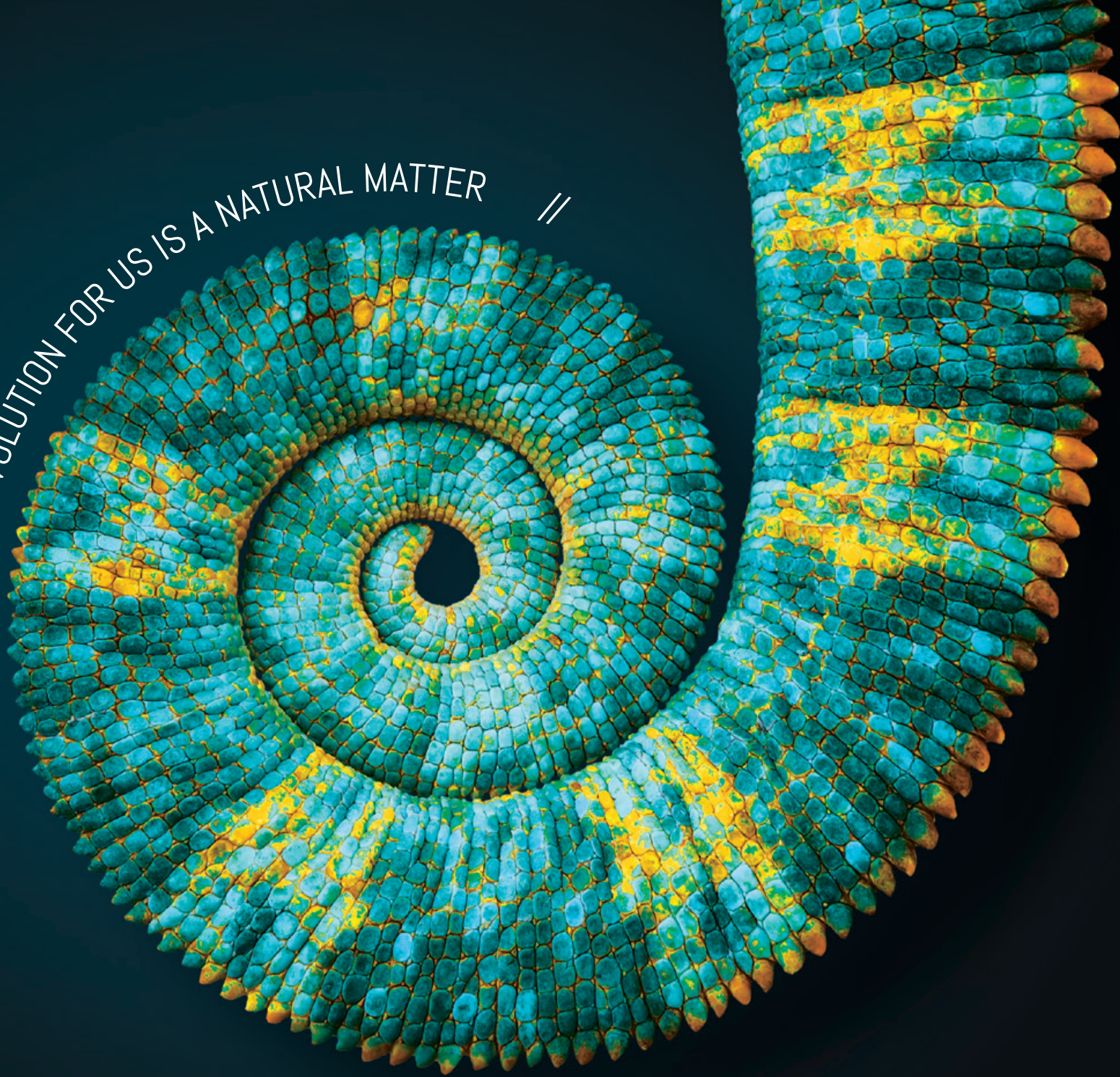
Zirconium oxide and energy saving.

In order to eliminate the eddy currents generated by the Hastelloy Isolation shell, a zirconium oxide ZrO₂ isolation shell is available upon request

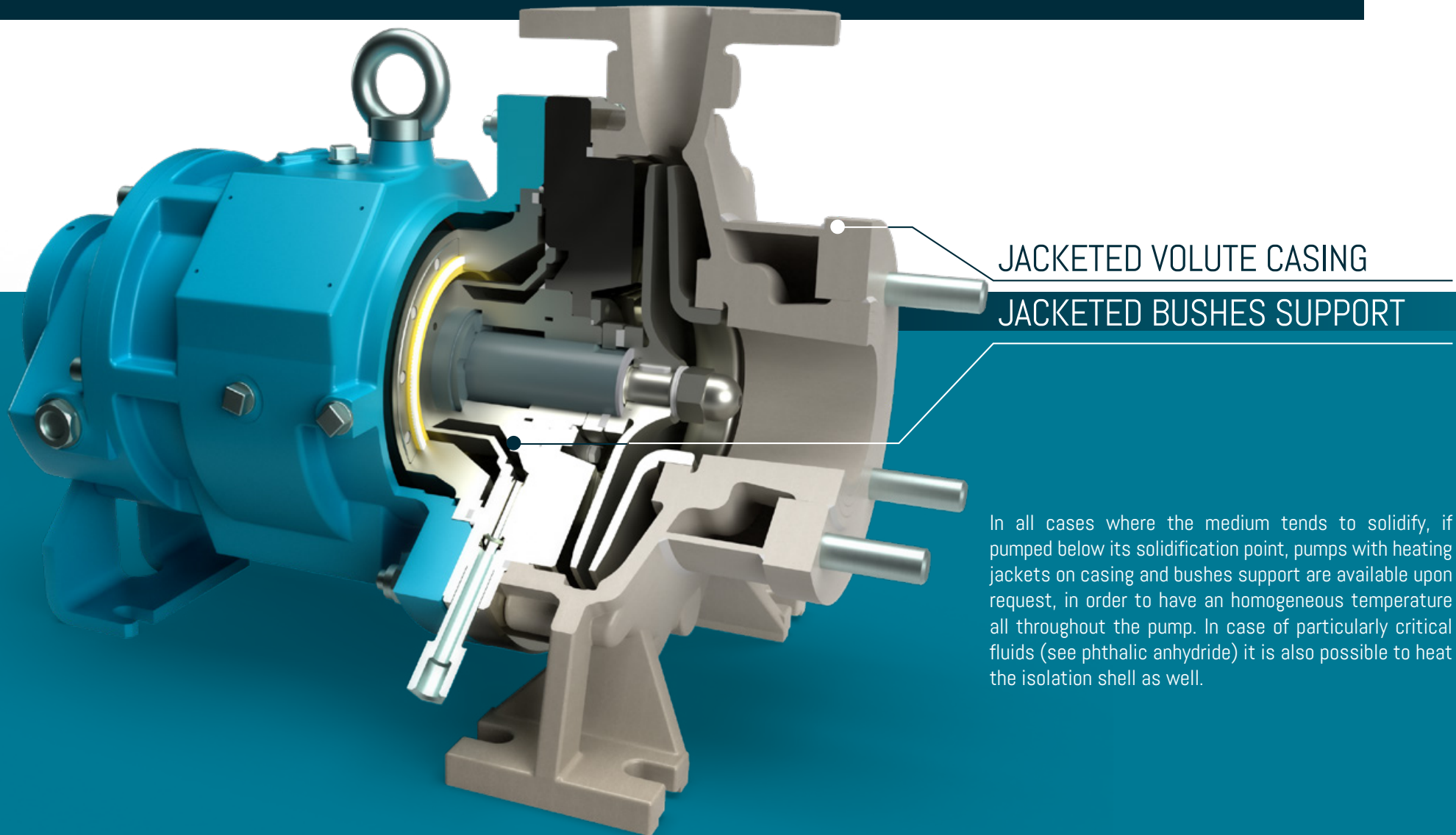
Advantages of the ZrO₂ Isolation shell:

- Reduction of absorbed power up to 25%, resulting in the increase in pump efficiency.
- Removal of the Joule effect caused by eddy currents. This is essential in all cases where pumping low-boiling fluids or liquids subject to evaporation
- Preservation and stability of the liquid temperature, in conditions where duty is close to the admissible minimum flow

// EVOLUTION FOR US IS A NATURAL MATTER //



Heating jacket arrangement



JACKETED VOLUTE CASING

JACKETED BUSHES SUPPORT

In all cases where the medium tends to solidify, if pumped below its solidification point, pumps with heating jackets on casing and bushes support are available upon request, in order to have an homogeneous temperature all throughout the pump. In case of particularly critical fluids (see phthalic anhydride) it is also possible to heat the isolation shell as well.



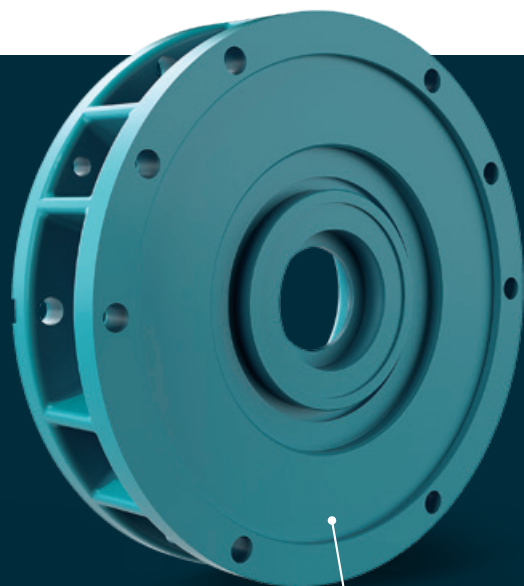
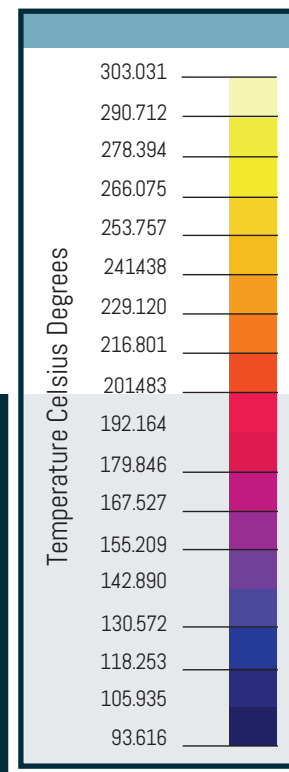
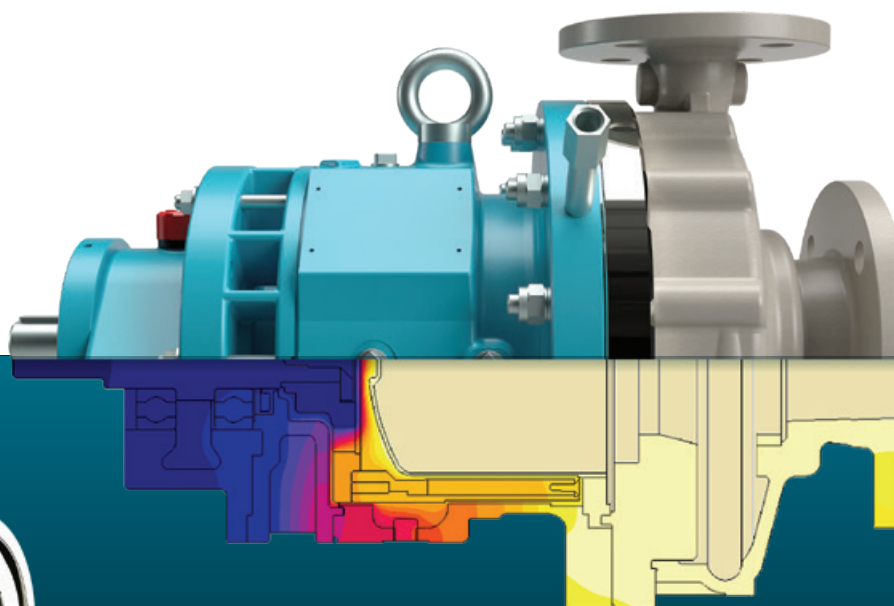
High temperature Execution

Internal and external magnets are made of:

- NdFeBo for temperatures up to 180 ° C
- SmCo for temperatures up to 300 ° C

For continuous operation at Temp > 200 ° C, it is provided a bearing support arranged with no-contact oil seal rings (labyrinth seal type).

CHROMATIC TEMPERATURE MAP (FLUID at 300 ° C)



HEAT DISSIPATION FLANGE



BEARING PROTECTION WITH NO-CONTACT LABYRINTH SEAL

UTS
eVO



Low temperature Execution

The permanent magnets inside the inner and outer core are in SmCo(Samarium Cobalt). The pump is then arranged with materials such as carbon steel or Aisi 304, selected according to the lowest temperature (min -100 ° C)

OPTION: LANTERN ARRANGED TO BE FLUSHED WITH NITROGEN

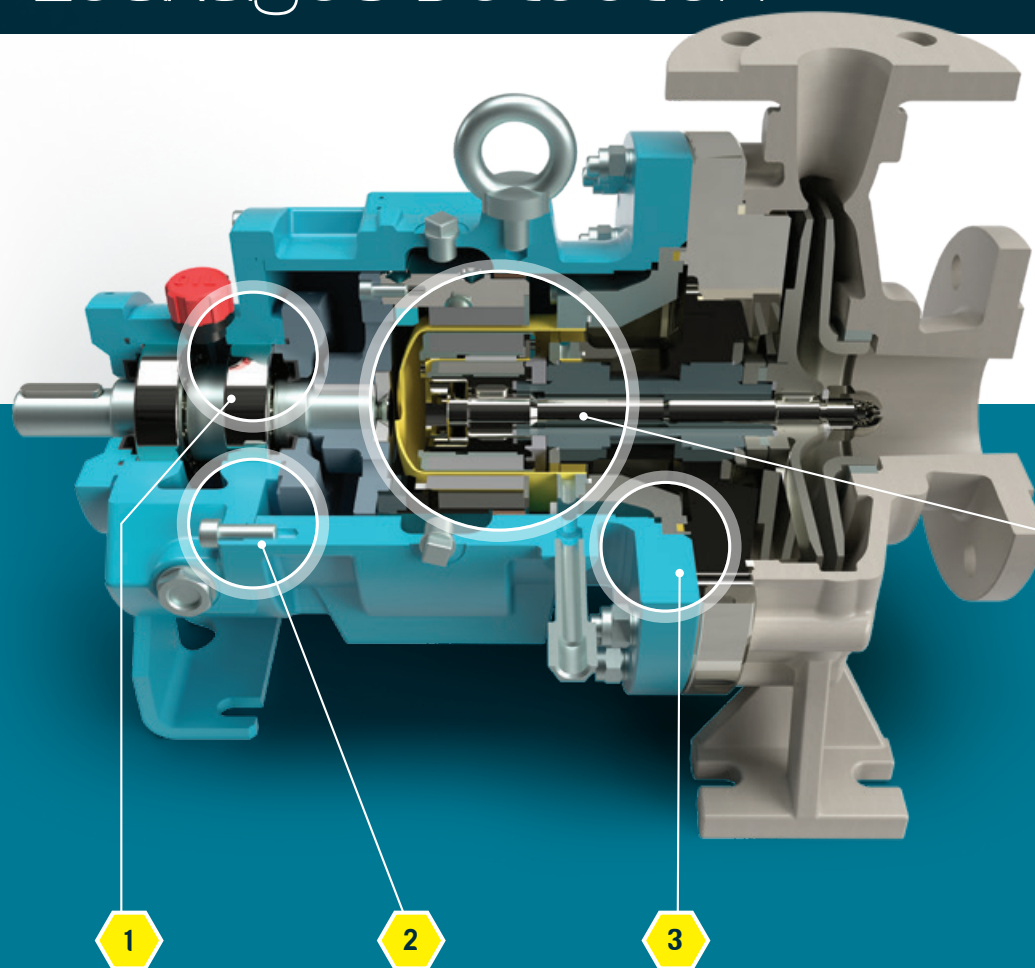




Enhanced safety: Double Containment and Leakages Detection

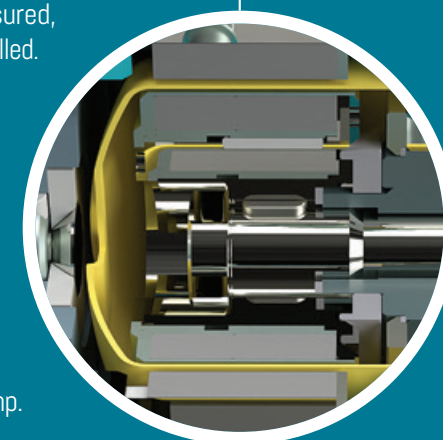
Double containment + Level switch

In all the cases where the safety level against external contamination must be assured, the lantern can be used as a secondary containment. Any possible leakage of the pumped liquid caused by the isolation shell failure, is thus fully contained within the lantern, by mounting a sealing ring instead of the classic corteco / oil seal (1). The containment is also guaranteed by specific o-ring seals located in all critical areas (2) (3). Providing then a level switch on the bottom of the lantern, it is possible to stop the pump as soon as any internal leakage is detected.

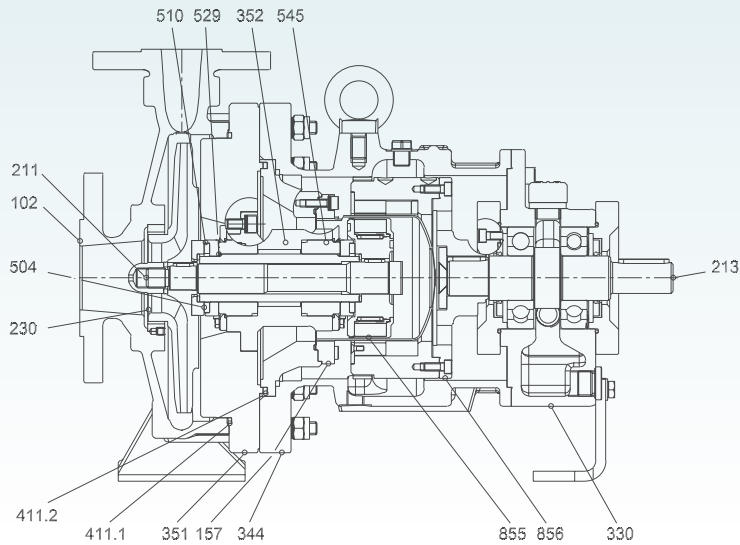


Double Isolation Shell + Pressure switch

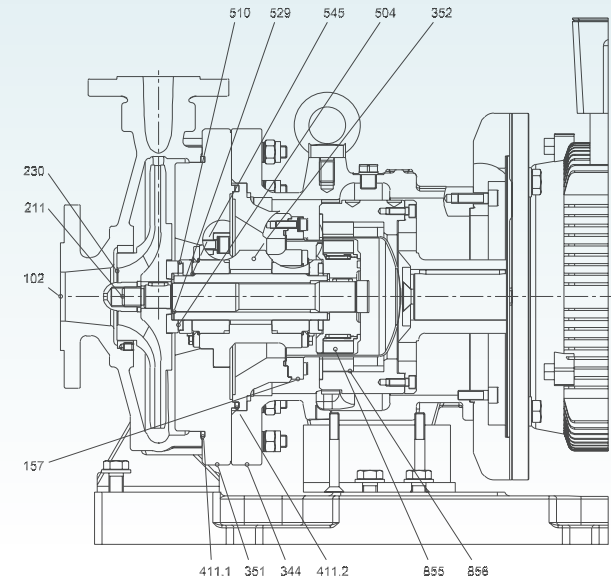
In all the cases where the safety level against external contamination must be assured, a secondary isolation shell may be installed. Any possible leakage of the pumped liquid caused by the failure of the primary isolation shell in Hastelloy, is thus fully contained within the isolation shell in ZrO₂ which works as a secondary containment. The presence of the liquid between the two isolation shells can be detected through a pressure switch which promptly intervenes stopping the pump.



UTS evo



UTS - B evo

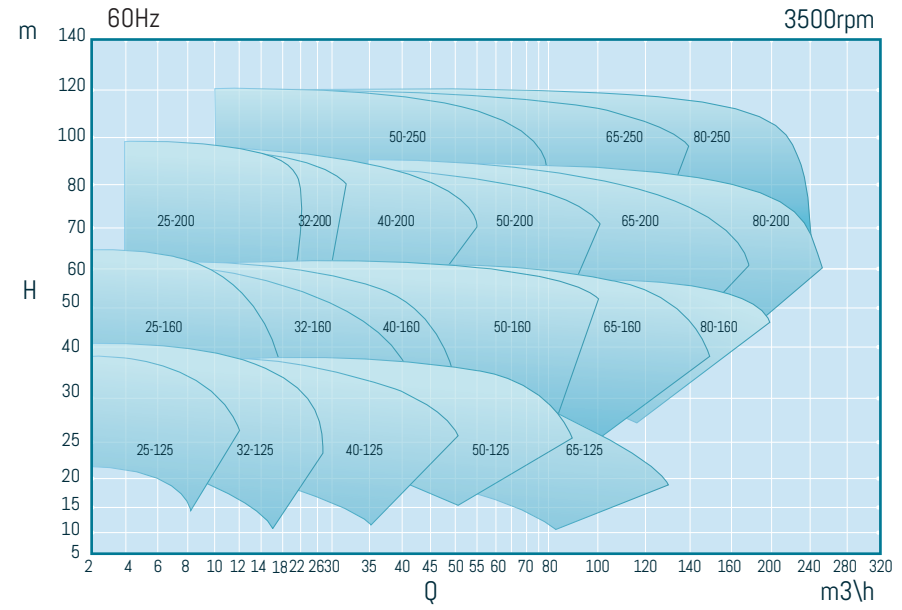
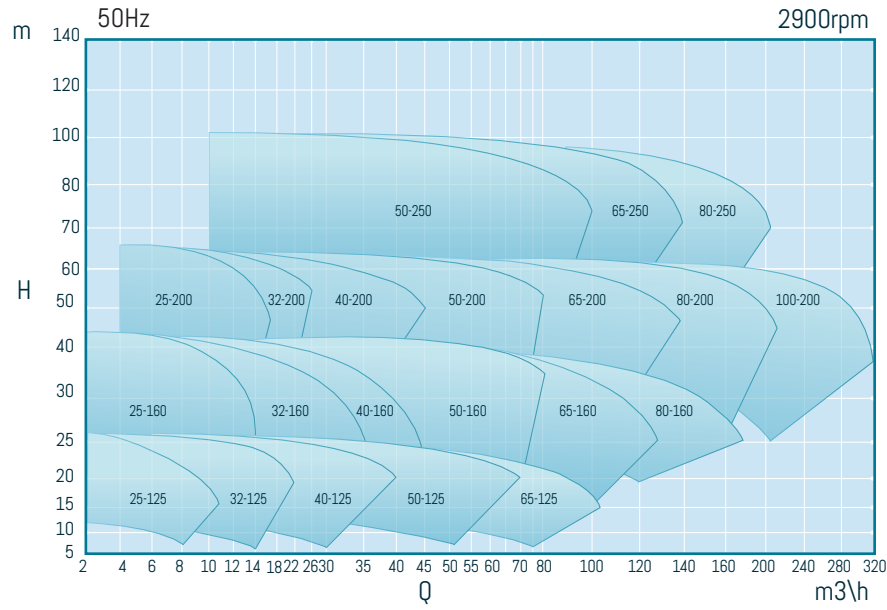


TECHNICAL SPECIFICATIONS

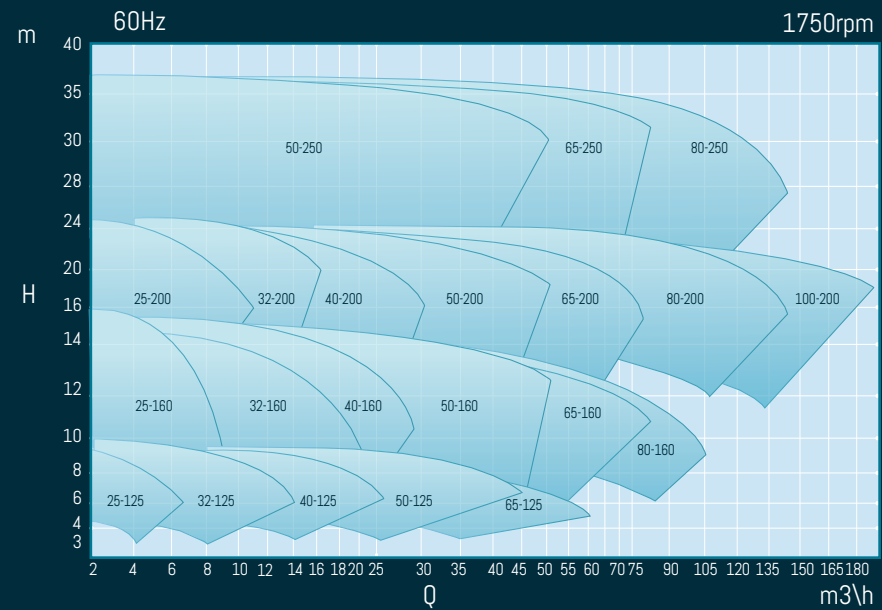
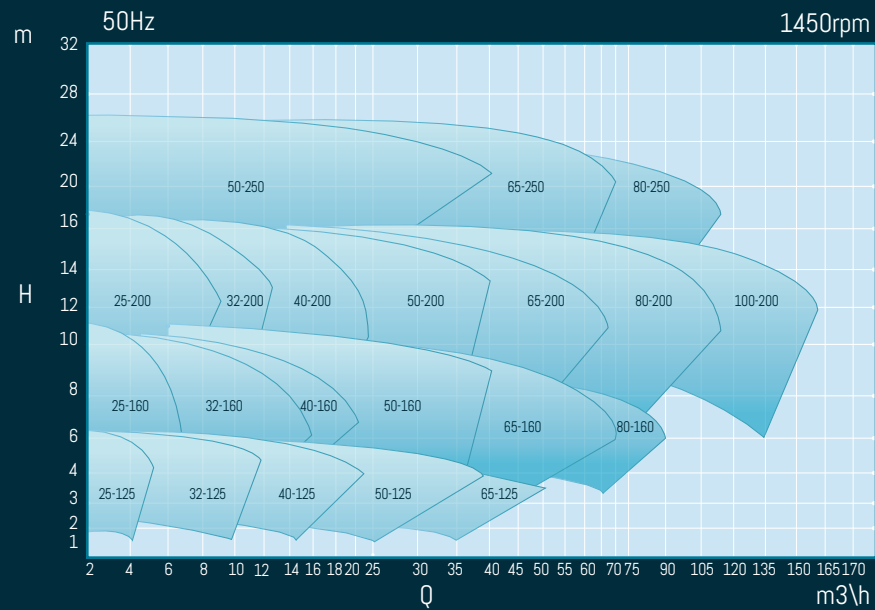
Performances at 2900 rpm	Q max = 320 m3/h -> H max = 95 mcl
Electric Motors	<ul style="list-style-type: none"> • UTS-B : 1,1 kW (motor size 80) -> 45 kW (motor size 225) • UTS : 1,1 kW (motor size 80) -> 90 kW (motor size 280)
Allowable temperature range	<ul style="list-style-type: none"> • UTS-B : -40 °C* -> +250 °C • UTS : -40 °C* -> +300 °C * -100 °C special execution
Allowable pressure range	<ul style="list-style-type: none"> • UTS series 160 : 16 bar (20 °C) • UTS series 200 /250 : 16 bar (20 °C)
Flange connections	<ul style="list-style-type: none"> • UNI 1092-1 / ISO 7005-1 PN 16, type B • On request ANSI 150 RF
Viscosity	0,5 cP min - 180 cP max
Allowable solids	<ul style="list-style-type: none"> • Max concentration: 2 % in weight • Max particle size : 0,3 mm

PART LIST

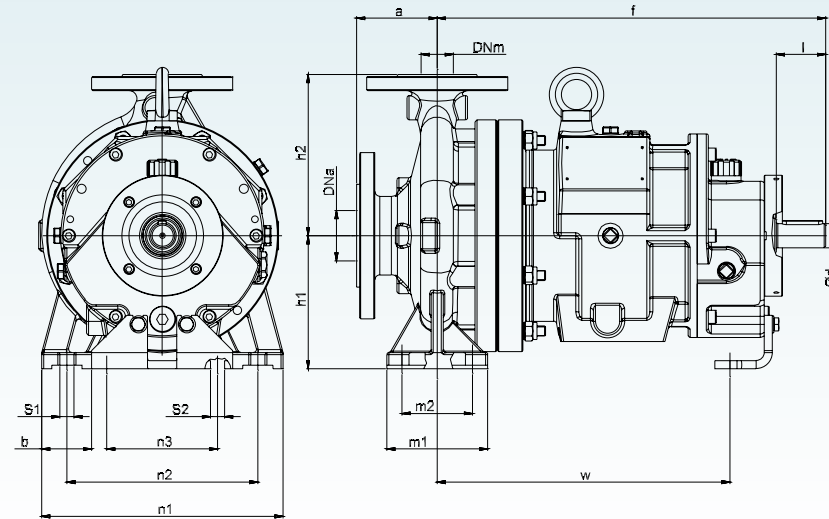
DIN	COMPONENT	MATERIAL
102	Casing	AISI 316 (14408-CF8M)
157	Isolation Shell	Hastelloy C + AISI 316L
211	Pump Shaft	AISI 316 (14401)
213	Shaft	Steel C45
230	Impeller	AISI 316 (14408-CF8M)
330	Bearing bracket support	GS400
344	Lantern	GS400 (C40*- AISI316*)* Special Execution
351	Bushes support (flange)	AISI 316L (14409-CF3M) \ AISI 316 (14401)
352	Bushes support (seat)	AISI 316L (14409-CF3M) \ AISI 316 (14401)
411.x	O-Ring	PTFE \ Grafoil
504.x	Spacer ring	PTFE \ Armored Grafoil
510	Thrust bearing	SiC \ RSSiC
529	Bearing sleeve	SiC \ RSSiC
545	Static bushes	SiC \ Grafite \ PEEK \ RSSiC
855	Inner magnet	AISI 316L (14404)
856	Outer magnet	GS400 \ HT (high temperature execution)



Performance Curves

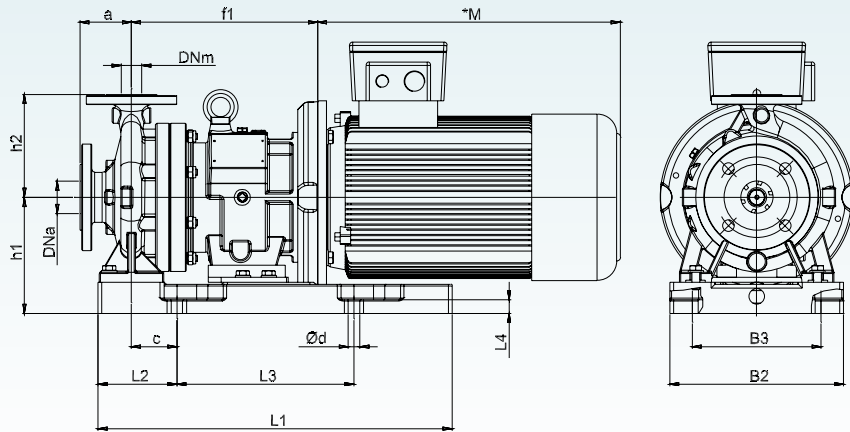


Not binding data refers to water at room temperature. For specific performance curve please contact CDR Pompe S.R.L.

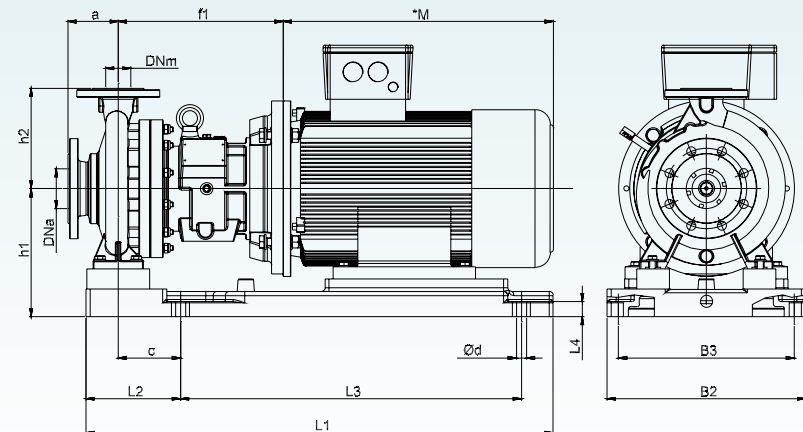


Supp.	Bracket Pump Size	DNa	DNm	a	b	f	h1	h2	l	m1	m2	n1	n2	n3	S1	S2	w		
				mm	mm	mm	mm	mm	mm	mm	mm	mm	mm	mm	mm	mm	mm		
1	UTS EVO 40-25-125	40	25	80	50	24	385	112	140	50	100	70	190	140	110	14	14	285	
	UTS EVO 40-25-160	40	25	80	50	24	385	132	160	50	100	70	240	190	110	14	14	285	
	UTS EVO 40-25-200	40	25	80	50	24	385	160	180	50	100	70	240	190	110	14	14	285	
	UTS EVO 50-32-125	50	32	80	50	24	385	112	140	50	100	70	190	140	110	14	14	285	
	UTS EVO 50-32-160	50	32	80	50	24	385	132	160	50	100	70	240	190	110	14	14	285	
	UTS EVO 50-32-200	50	32	80	50	24	385	160	180	50	100	70	240	190	110	14	14	285	
	UTS EVO 65-40-125	65	40	80	50	24	385	112	140	50	100	70	210	160	110	14	14	285	
	UTS EVO 65-40-160	65	40	80	50	24	385	132	160	50	100	70	240	190	110	14	14	285	
	UTS EVO 65-40-200	65	UNI EN 40	UNI EN 40	100	50	24	385	160	180	50	100	70	265	212	110	14	14	285
	UTS EVO 80-50-125	80	1092-1 50	1092-1 50	100	50	24	385	132	160	50	100	70	240	190	110	14	14	285
	UTS EVO 80-50-160	80	PN 16RF 50	PN 16RF 50	100	50	24	385	160	180	50	100	70	265	212	110	14	14	285
	UTS EVO 80-50-200	80	slotted 50	slotted 50	100	50	24	385	160	200	50	100	70	265	212	110	14	14	285
	UTS EVO 100-65-125	100	ANSI 150 65	ANSI 150 65	100	65	24	385	160	180	50	125	95	280	212	110	14	14	285
	2	UTS EVO 65-40-250	65	40	100	65	32	500	180	225	80	125	95	320	250	110	14	14	370
UTS EVO 80-50-250		80	50	125	65	32	500	180	225	80	125	95	320	250	110	14	14	370	
UTS EVO 100-65-160		100	65	100	65	32	500	160	200	80	125	95	280	212	110	14	14	370	
UTS EVO 100-65-200		100	65	100	65	32	500	180	225	80	125	95	320	250	110	14	14	370	
UTS EVO 100-65-250		100	65	125	80	32	500	200	250	80	160	120	360	280	110	18	14	370	
UTS EVO 125-80-160		125	80	125	65	32	500	180	225	80	125	95	320	250	110	14	14	370	
UTS EVO 125-80-200		125	80	125	65	32	500	180	250	80	125	95	345	280	110	14	14	370	
UTS EVO 125-80-250		125	80	125	80	32	500	225	280	80	160	120	400	315	110	18	14	370	
UTS EVO 125-100-200		125	100	125	80	32	500	200	280	80	160	120	360	280	110	18	14	370	

UTS evo close-coupled motor frame B5



UTS evo close-coupled motor frame B35



Supp.	Bracket Pump Size	DNa	DNm									h1				f1					
				a	B2	B3	c	h2	L1	L2	L3	L4	Ød	mot.	mot.	mot.	mot.	mot.	mot.	mot.	mot.
				mm								mm				mm					
1	UTS-B EVO 40-25-125	40	25	80	270	200	70,5	140	550	122,5	275	21	18	180	180	180	266	276	287	322	
	UTS-B EVO 40-25-160	40	25	80	270	200	70,5	160	550	122,5	275	21	18	180	180	180	268	278	289	324	
	UTS-B EVO 40-25-200	40	25	80	270	200	70,5	180	550	122,5	275	21	18	180	180	180	268	278	289	324	
	UTS-B EVO 50-32-125	50	UNI EN 32	UNI EN	80	270	200	70,5	140	550	122,5	275	21	18	180	180	180	268	278	289	324
	UTS-B EVO 50-32-160	50	1092-1 32	1092-1	80	270	200	70,5	160	550	122,5	275	21	18	180	180	180	268	278	289	324
	UTS-B EVO 50-32-200	50	PN 16RF 32	PN 16RF	80	270	200	70,5	180	550	122,5	275	21	18	180	180	180	269	279	290	325
	UTS-B EVO 65-40-125	65	asolati 40	asolati	80	270	200	70,5	140	550	122,5	275	21	18	180	180	180	268	278	289	324
	UTS-B EVO 65-40-160	65	ANSI 40	ANSI	80	270	200	70,5	160	550	122,5	275	21	18	180	180	180	268	278	289	324
	UTS-B EVO 65-40-200	65	150 40	150	100	270	200	70,5	180	550	122,5	275	21	18	180	180	180	269	279	290	325
	UTS-B EVO 80-50-125	80	50	50	100	270	200	70,5	160	550	122,5	275	21	18	180	180	180	271	281	292	327
UTS-B EVO 80-50-160	80	50	50	100	270	200	70,5	180	550	122,5	275	21	18	180	180	180	272	282	293	328	
UTS-B EVO 80-50-200	80	50	50	100	270	200	70,5	200	550	122,5	275	21	18	180	180	180	272	282	293	328	
UTS-B EVO 100-65-125	100	65	65	100	270	200	70,5	180	550	122,5	275	21	18	180	180	180	276	286	297	332	
UTS-B EVO 100-65-160	100	65	65	100	270	200	82,5	200	550	122,5	275	21	18	180	180	180	208	335			

*M dimension is up to motor manufacturer

Supp.	Bracket Pump Size	DNa	DNm									h1				f1				
				a	B2	B3	c	h2	L1	L2	L3	L4	Ød	mot.	mot.	mot.	mot.	mot.	mot.	mot.
				mm								mm				mm				
1	UTS-B EVO 80-50-160	80	50	100	395	350	124	180	930	188	679	30	20					255		327
	UTS-B EVO 80-50-200	80	50	100	395	350	124	200	930	188	679	30	20					255		328
	UTS-B EVO 100-65-125	100	65	100	395	350	125	180	930	188	679	30	20					255		332
	UTS-B EVO 65-40-250	65	UNI EN 40	UNI EN	100	395	350	125	225	930	188	679	30	20	235	235	255	348	383	383
	UTS-B EVO 80-50-250	80	1092-1 50	1092-1	125	395	350	125	225	930	188	679	30	20	235	235	255	346	381	381
2	UTS-B EVO 100-65-160	100	PN 16RF 65	PN 16RF	100	395	350	125	200	930	188	679	30	20	215	235	255	346	381	381
	UTS-B EVO 100-65-200	100	slotted 65	slotted	100	395	350	125	225	930	188	679	30	20	235	235	255	348	383	383
	UTS-B EVO 100-65-250	100	ANSI 150 65	ANSI 150	125	395	350	110	250	930	188	679	30	20	255	255	255	346	381	381
	UTS-B EVO 125-80-160	125	80	125	395	350	125	225	930	188	679	30	20	235	235	255	347	382	382	
	UTS-B EVO 125-80-200	125	80	125	395	350	125	250	930	188	679	30	20	235	235	255	348	383	383	
	UTS-B EVO 125-80-250	125	80	125	395	350	110	280	930	188	679	30	20	280	280	280	346	381	381	
	UTS-B EVO 125-100-200	125	100	125	395	350	110	280	930	188	679	30	20	255	255	255	348	383	383	

Supp.	Bracket Pump Size	DNa	DNm									h1		f1					
				a	B2	B3	c	h2	L1	L2	L3	L4	Ød	mot.	mot.	mot.	mot.		
				mm								mm		mm					
1	UTS-B EVO 80-50-200	80	50	100	406	360	124	200	1036	188	785	30	20	275	325				
	UTS-B EVO 65-40-250	65	40	100	406	360	125	225	1036	188	785	30	20	255	280	325	380		
	UTS-B EVO 80-50-250	80	50	125	406	360	125	225	1036	188	785	30	20	255	280	325	378		
	UTS-B EVO 100-65-160	100	65	100	406	360	125	200	1036	188	785	30	20	255	325				
	UTS-B EVO 100-65-200	100	65	100	406	360	125	225	1036	188	785	30	20	255	280	325	380		
2	UTS-B EVO 100-65-250	100	65	125	406	360	110	250	1036	188	785	30	20	275	280	325	378		
	UTS-B EVO 125-80-160	125	80	125	406	360	125	225	1036	188	785	30	20	255	280	325	379		
	UTS-B EVO 125-80-200	125	80	125	406	360	125	250	1036	188	785	30	20	255	280	325	380		
	UTS-B EVO 125-80-250	125	80	125	406	360	110	280	1036	188	785	30	20	300	300	325	378		
	UTS-B EVO 125-100-200	125	100	125	406	360	110	280	1036	188	785	30	20	275	280	325	380		

*M dimension is up to motor manufacturer.

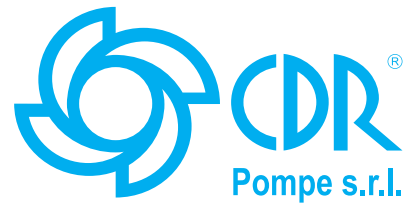
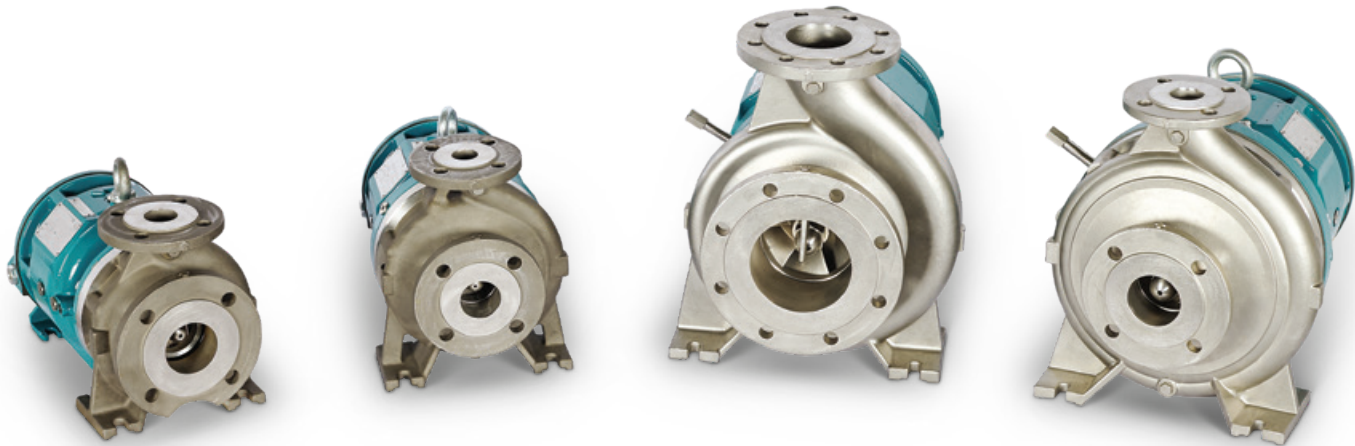
Not binding data.



// EVOLUTION FOR US IS A NATURAL MATTER //



// WWW.CDRPOMPE.COM //



CDR Pompe S.r.l.

Via Raffaello Sanzio, 57 - 20021 Bollate (MI) ITALY
Tel. +39 029901941 - Fax +39 029980606

// rdo@cdrpompe.com //



// WWW.CDRPOMPE.COM //